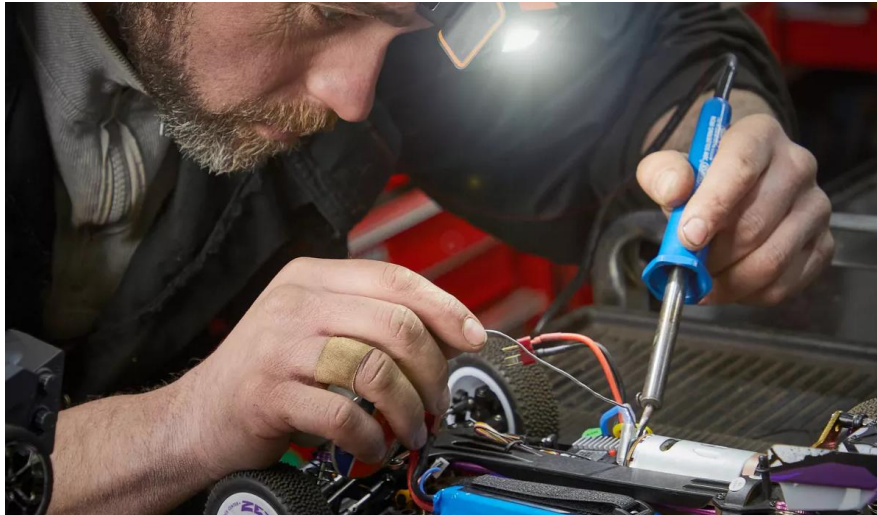


LEDinspect HEADTORCH250

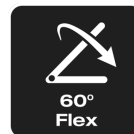
Inspectionlights



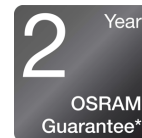
Motion Sensor Activation
Easily control light during hands free use



250 Lumen
Two light functions High: Up to 250 lm Low: Up to 140 lm

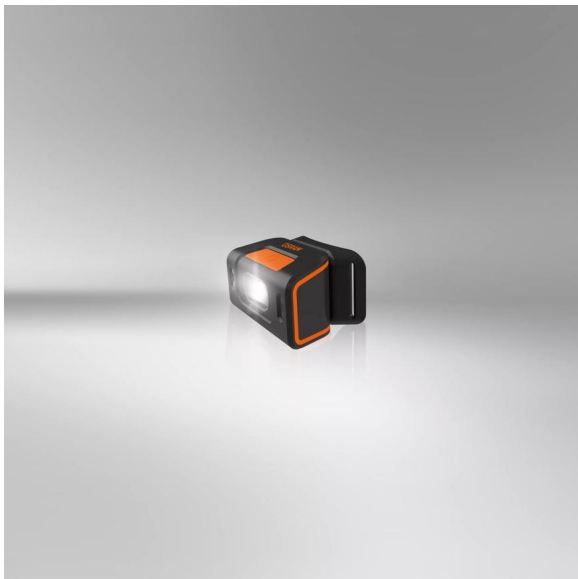


60° Flex
Adjustable light angle to get the light to the desired position



2-year-OSRAM guarantee*
Systematic quality assurance measures underpin the premium workmanship and functionality of our products. Innovative technology and excellent quality really pay dividends for our customers.

Product family datasheet



Light is versatile

This high-quality headtorch from OSRAM is perfect for professional and private use. With two light functions - high up to 250lm and low up to 140lm, there is a light output to suit a wide variety of tasks. The integrated motion sensor technology allows for hassle-free, hands-free working and the option for the 60° tilt angle provides flexibility to give light where needed. The rechargeable battery allows up to 3.5h of operation at high power or up to 6h at low power. A USB Type-C charging cable and the corresponding power adaptor are included in the scope of supply. In accordance with IP54 protection rating, this headtorch has protection against ingress of particles and against splashing water and is tested for impact resistance in accordance with IK08. The LEDinspect HEADTORCH 250 has soft pads inside and additionally an adjustable strap for optimal wearing comfort and is therefore ideal as a light for craft activities, car repairs and in everyday life. In addition, OSRAM grants a 2-year guarantee*

Product family datasheet

Technical data

| | Product information | General Product Information | Electrical Data | |
|---------------------|---|-----------------------------|-----------------|-----------------|
| Product description | Application (Category and Product specific) | Global order reference | Nominal wattage | Nominal voltage |
| INSPECTION LAMP | LED inspection lights | LEDIL404 | 5 W | 3.7 V |

| | Photometric Data | | | Physical Attributes & Dimensions |
|---------------------|-------------------|-----------------------|-----------------|----------------------------------|
| Product description | Color temperature | Nominal luminous flux | Light color LED | Product weight |
| INSPECTION LAMP | 5700 K | 250 lm | White | 105.00 g |

| | Length | Width | Height | LED module information |
|---------------------|---------|---------|---------|---------------------------|
| Product description | | | | Number of LEDs per module |
| INSPECTION LAMP | 67.0 mm | 42.0 mm | 45.0 mm | 1 |

| | Colors & materials | Lifetime Data | Additional product data | |
|---------------------|--------------------|---------------|-------------------------|------------------------------|
| Product description | Base color | Guarantee | Type of Battery | Number of included batteries |
| INSPECTION LAMP | Black / Orange | 2 years | Rechargeable | 1 |


| | | Capabilities | Certificates & standards | Logistical data |
|---------------------|------------------|--------------|--------------------------|-----------------------|
| Product description | Scope of battery | Technology | IK Class | Watt hour per battery |
| INSPECTION LAMP | Yes | LED | IK08 | 16.70 |

| | Environmental & Regulatory Information Information according Art. 33 of EU Regulation (EC) 1907/2006 (REACH) | | | |
|---------------------|---|----------------------------|------------------------|--|
| Product description | Date of declaration | Candidate list substance 1 | CAS No. of substance 1 | Safe use instruction |
| INSPECTION LAMP | 19-08-2024 | Lead | 7439-92-1 | The identification of the Candidate List substance is sufficient to allow safe use of the article. |

| Product description | Declaration no. in SCIP database |
|---------------------|--------------------------------------|
| INSPECTION LAMP | bdeca20c-87d7-47fc-a8d4-ed431387b196 |

Product family datasheet

Download Data

| File | |
|---|--|
|  | User instruction LEDinspect HEADTORCH 250 |

Legal advice

Application advice:

For more detailed application information and graphics please see product datasheet and user instruction.*for precise conditions please refer to:

www.osram.com/am-guarantee

Application advice

For more detailed application information and graphics please see product datasheet.

Disclaimer

Subject to change without notice. Errors and omission excepted. Always make sure to use the most recent release.